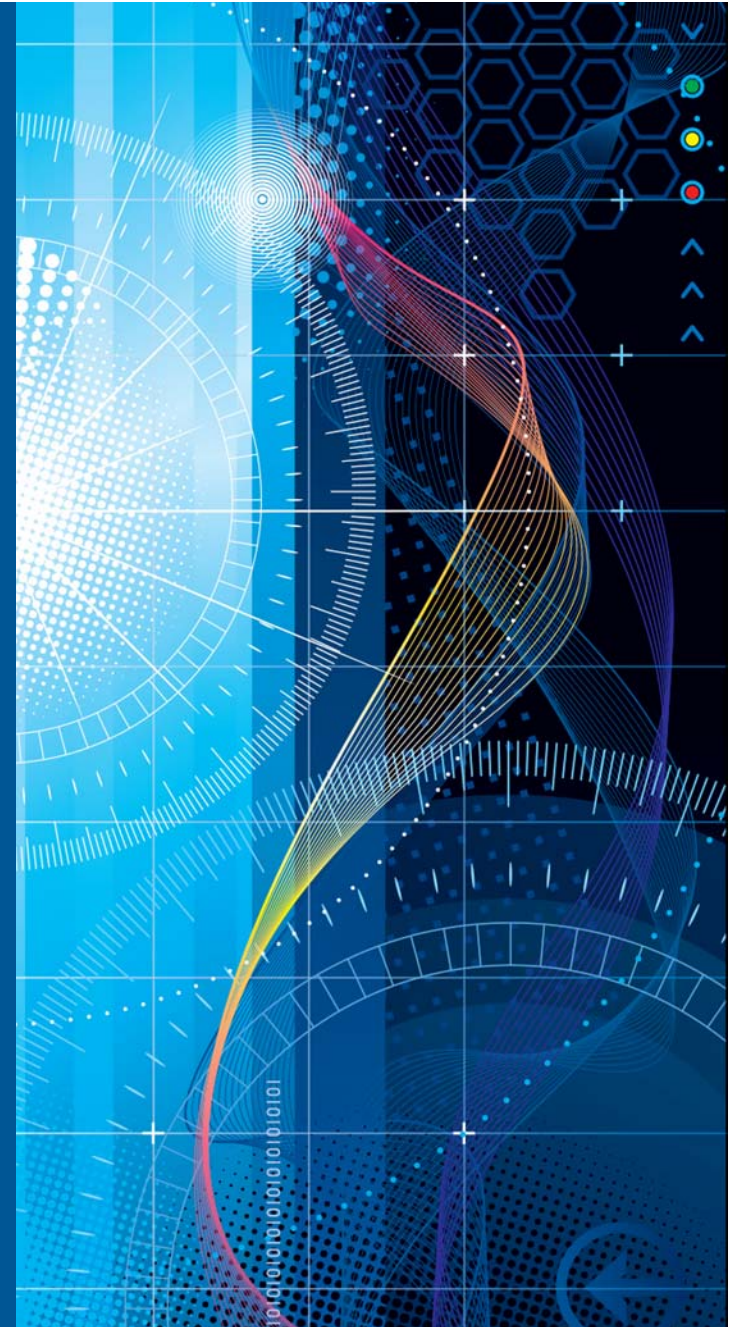


Using a Perfect Argument in an Imperfect World

John B. Goodenough
Charles B Weinstock

Software Engineering Institute
Carnegie Mellon University
Pittsburgh, PA 15213



Copyright 2015 ACM

This material is based upon work funded and supported by the Department of Defense under Contract No. FA8721-05-C-0003 with Carnegie Mellon University for the operation of the Software Engineering Institute, a federally funded research and development center.

NO WARRANTY. THIS CARNEGIE MELLON UNIVERSITY AND SOFTWARE ENGINEERING INSTITUTE MATERIAL IS FURNISHED ON AN “AS-IS” BASIS. CARNEGIE MELLON UNIVERSITY MAKES NO WARRANTIES OF ANY KIND, EITHER EXPRESSED OR IMPLIED, AS TO ANY MATTER INCLUDING, BUT NOT LIMITED TO, WARRANTY OF FITNESS FOR PURPOSE OR MERCHANTABILITY, EXCLUSIVITY, OR RESULTS OBTAINED FROM USE OF THE MATERIAL. CARNEGIE MELLON UNIVERSITY DOES NOT MAKE ANY WARRANTY OF ANY KIND WITH RESPECT TO FREEDOM FROM PATENT, TRADEMARK, OR COPYRIGHT INFRINGEMENT.

This material has been approved for public release and unlimited distribution.

This material may be reproduced in its entirety, without modification, and freely distributed in written or electronic form without requesting formal permission. Permission is required for any other use. Requests for permission should be directed to the Software Engineering Institute at permission@sei.cmu.edu.

DM-0002604



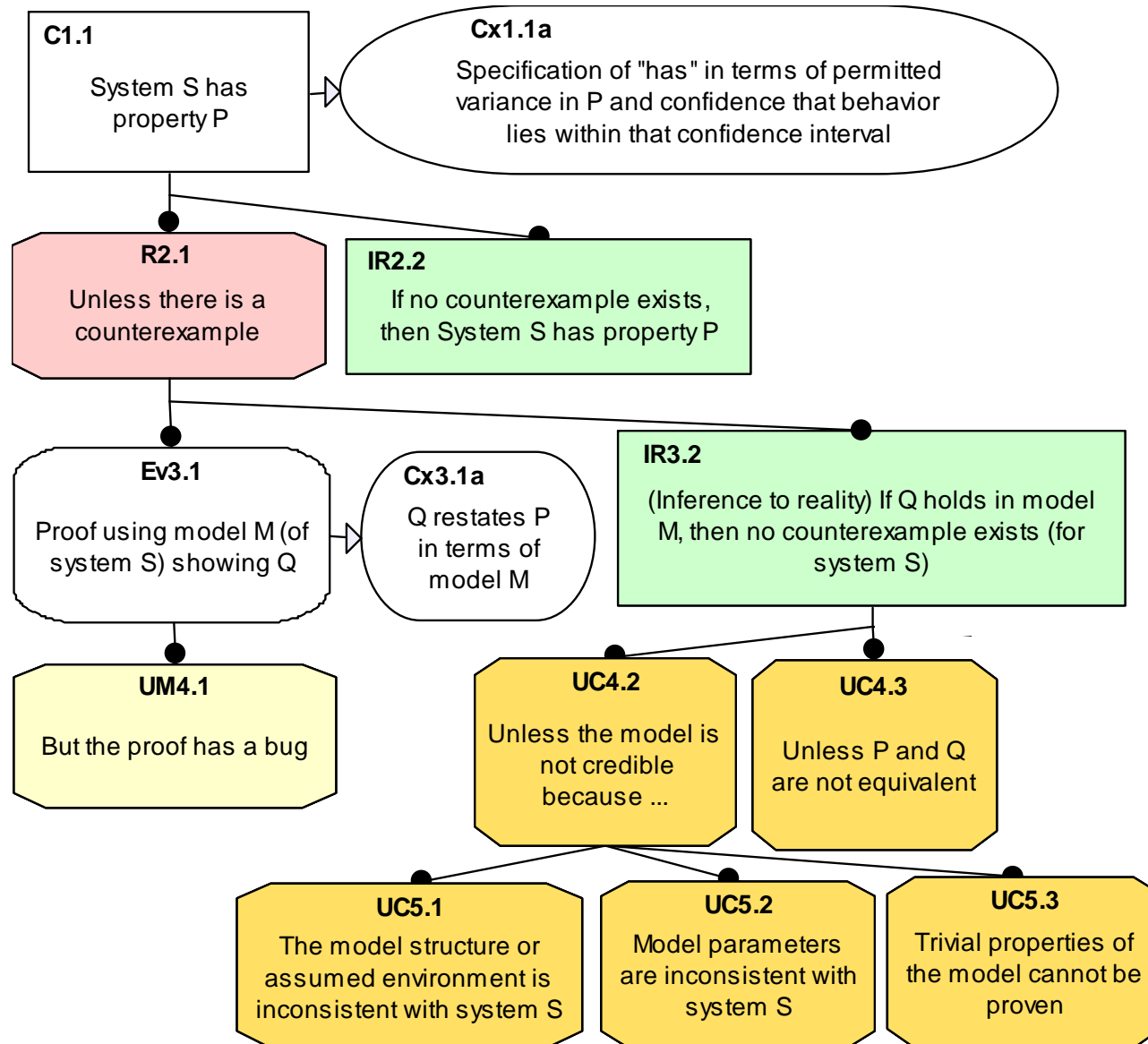
Overview

The role of proof in an assurance case

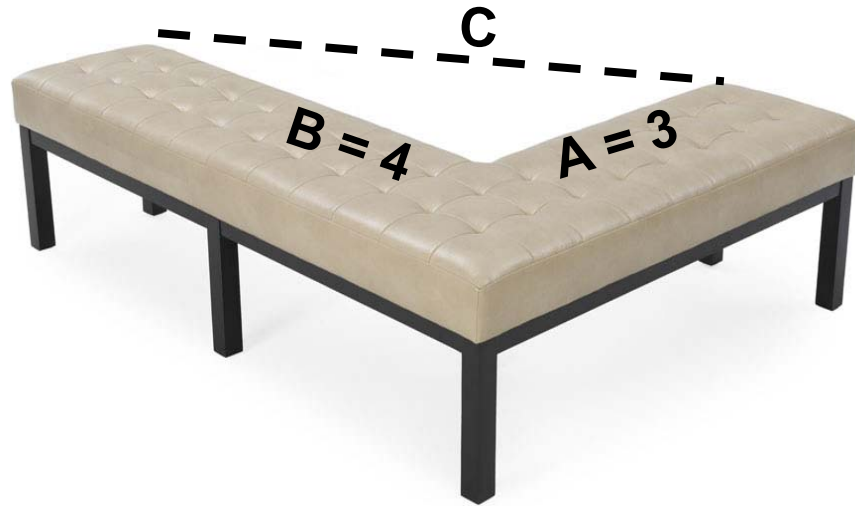
- Use *eliminative argumentation*
 - Doubts about validity of claims
 - Doubts about validity of evidence
 - Doubts about validity of inferences
- As doubts are eliminated, confidence increases
 - Schema for use of proof
 - Trivial example
 - More realistic example



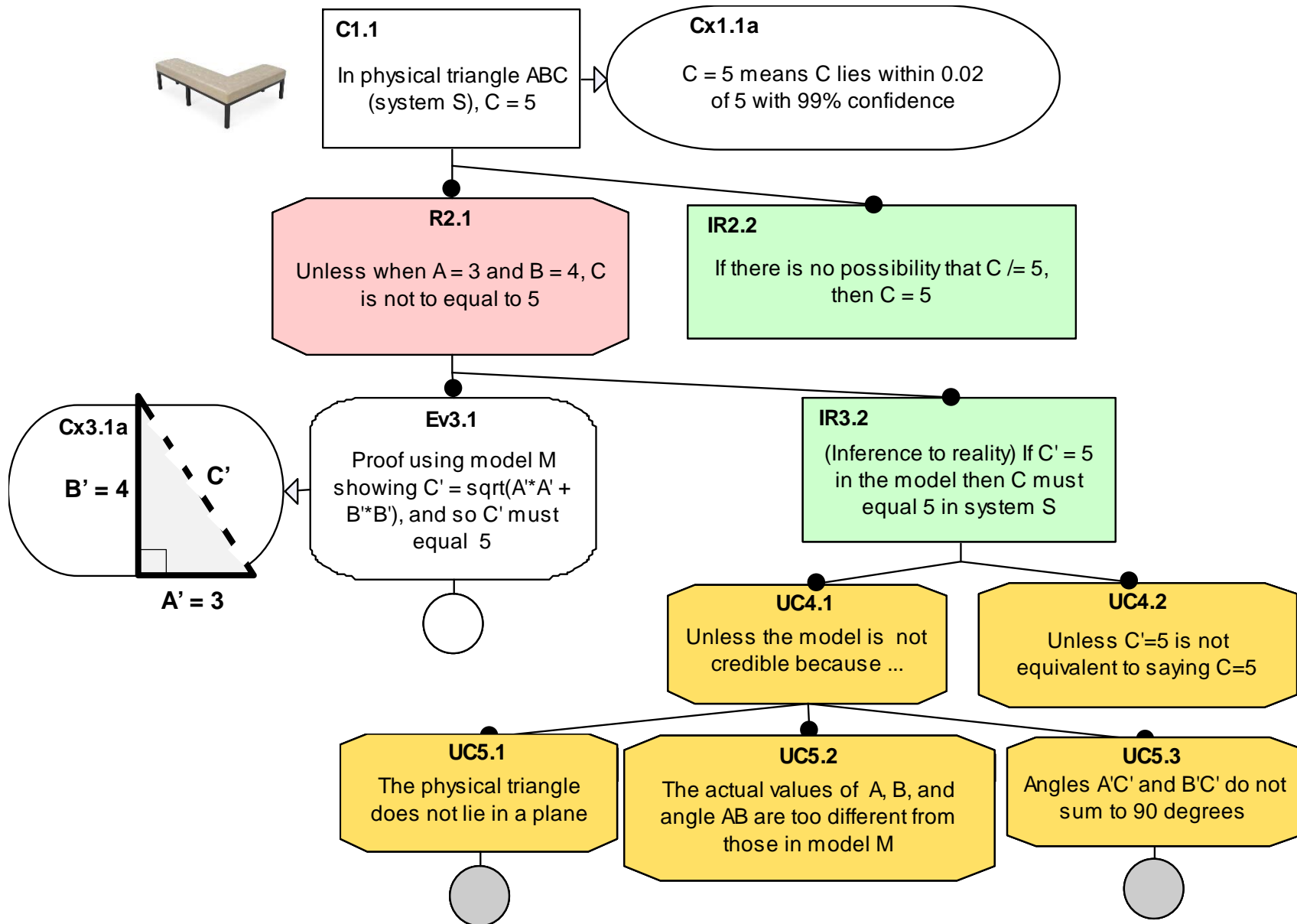
Schema for Use of Proof in a Case



Triangle Example



Triangle Example



Calculating Confidence

$A = 3 \pm 0.02$ (with 99% confidence)

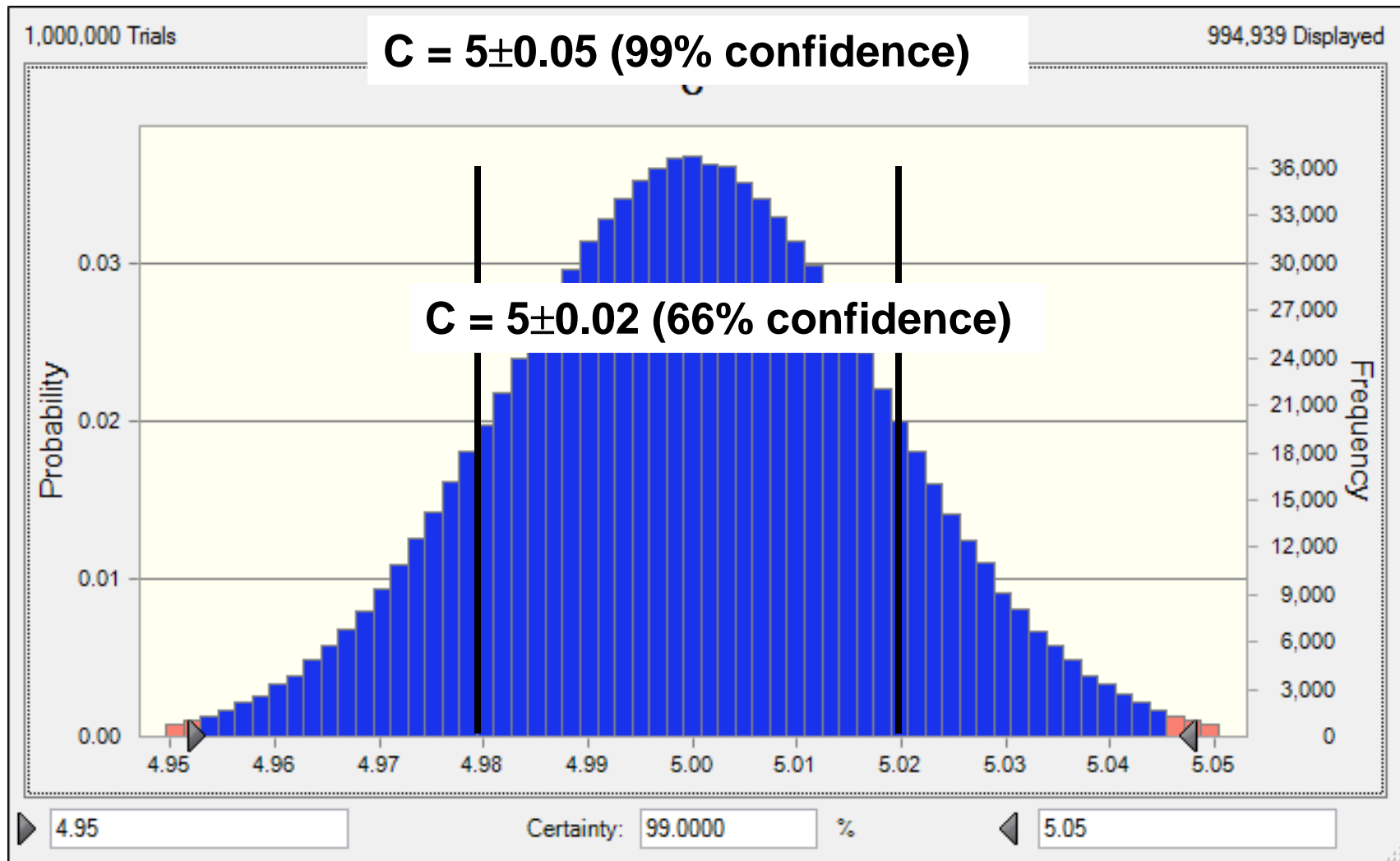
$B = 4 \pm 0.02$ (with 99% confidence)

$\alpha = 90^\circ \pm 1.0^\circ$ (with 99% confidence)

$C = \text{sqrt}(A^2 + B^2 - 2AB\cos(\alpha))$



Calculating Confidence

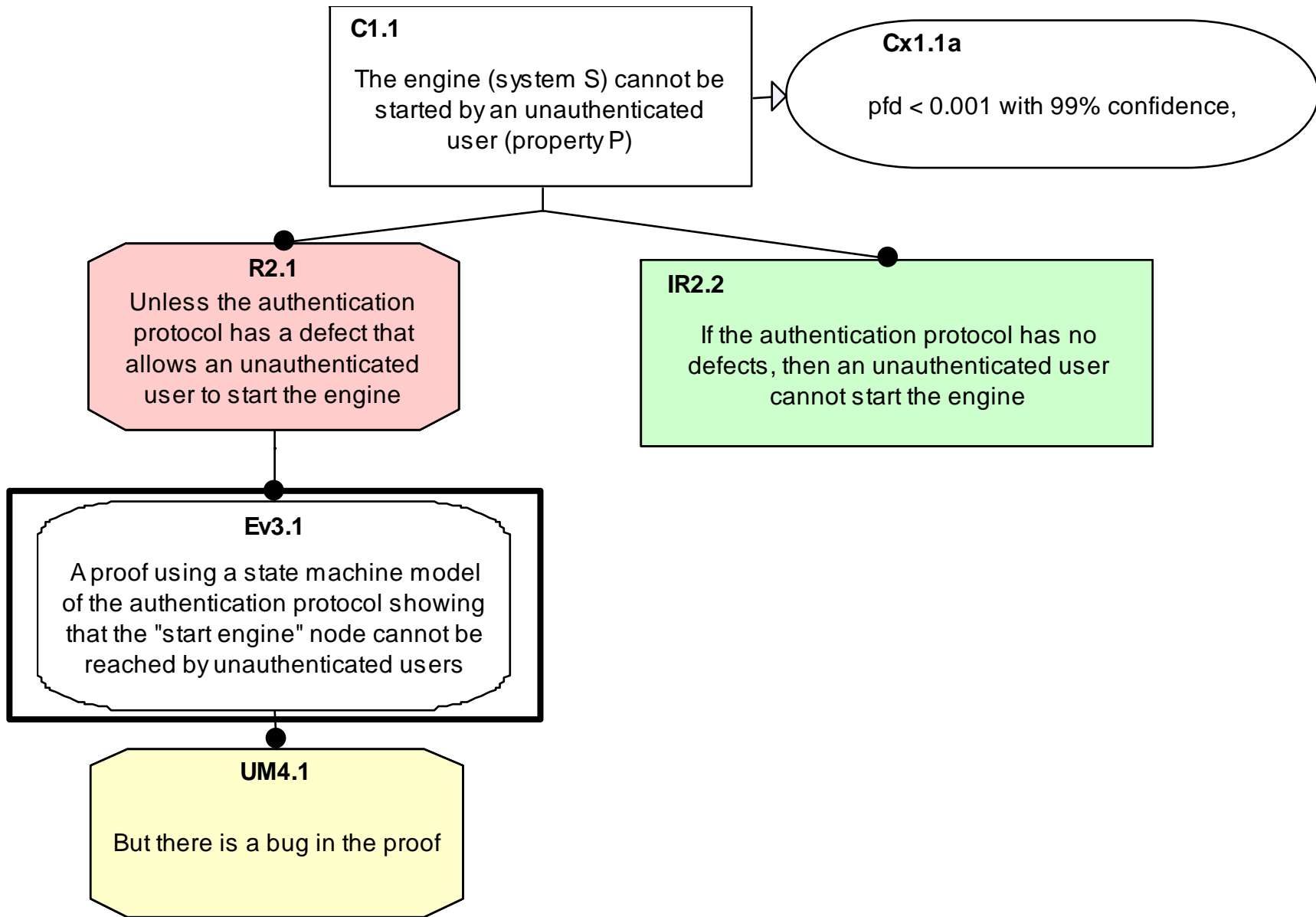


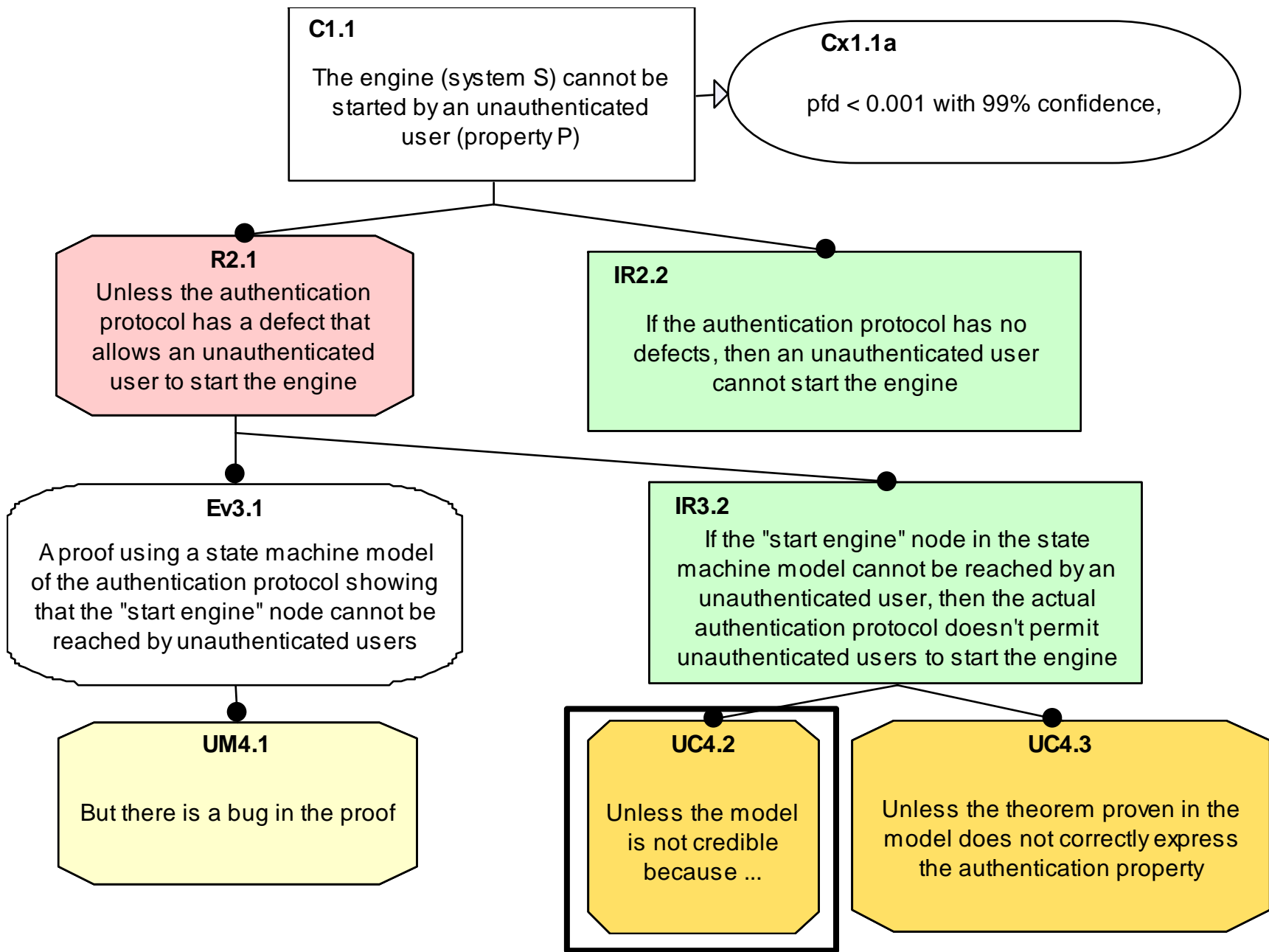
Calculating Confidence

Were fortunate to have a way of calculating how inaccuracies in the model would affect confidence in the conclusion

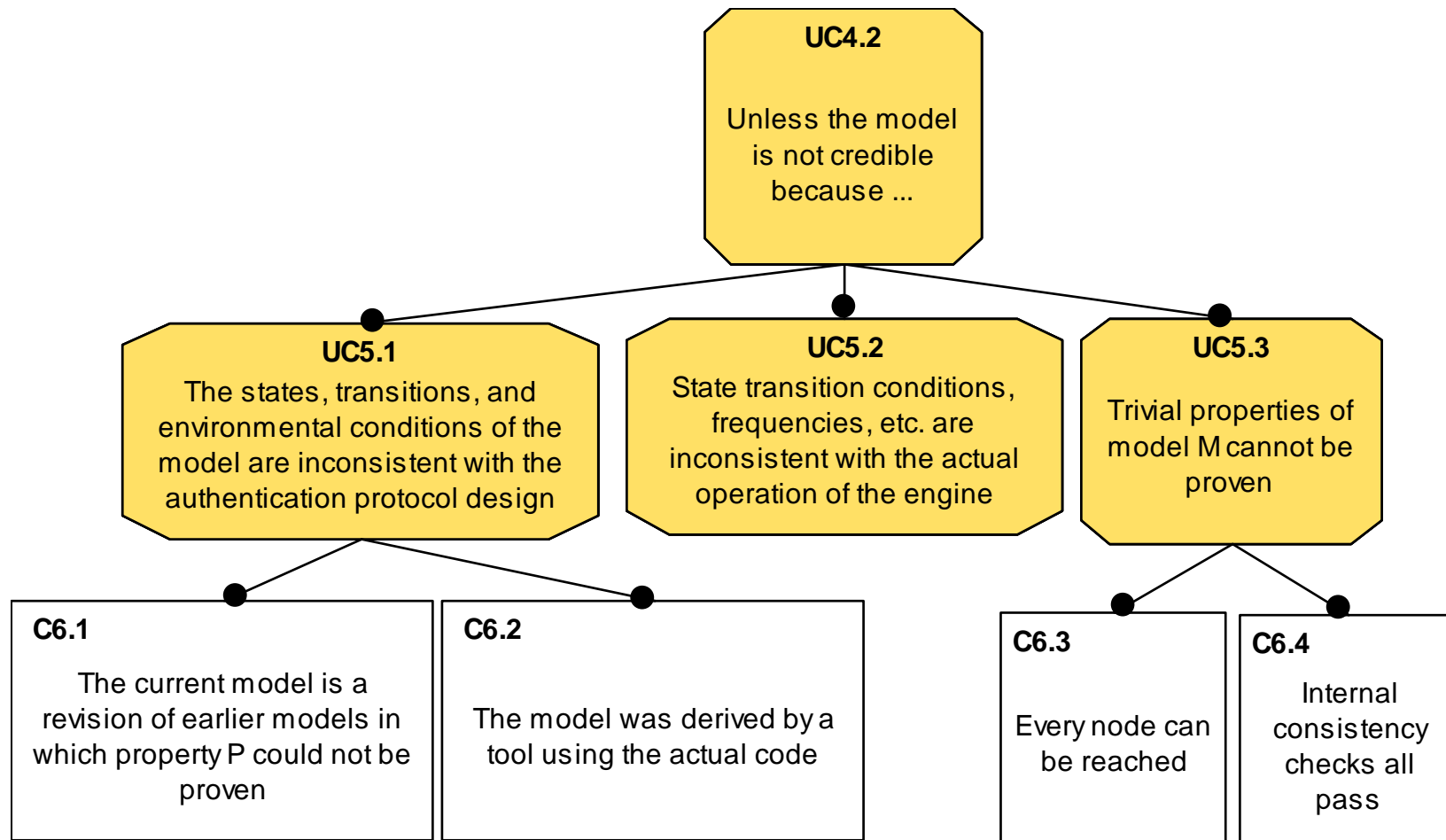
- Probabilistic variations in the model
- Affect confidence gained from the proof
- The analysis suggests where to strengthen the case







Model Credibility Evidence



Summary

Used Eliminative Argumentation to explore role of proofs in an AC

Considered how to use the proof as a guide for estimating the extent to which one can have confidence in the application of the proof result to the real world

- Modeling inaccuracies



Contact Information

John Goodenough

Telephone: +1 412.390.4043

Email: jbg@sei.cmu.edu

Chuck Weinstock

Telephone: +1 412.268.7719

Email: weinstock@sei.cmu.edu

